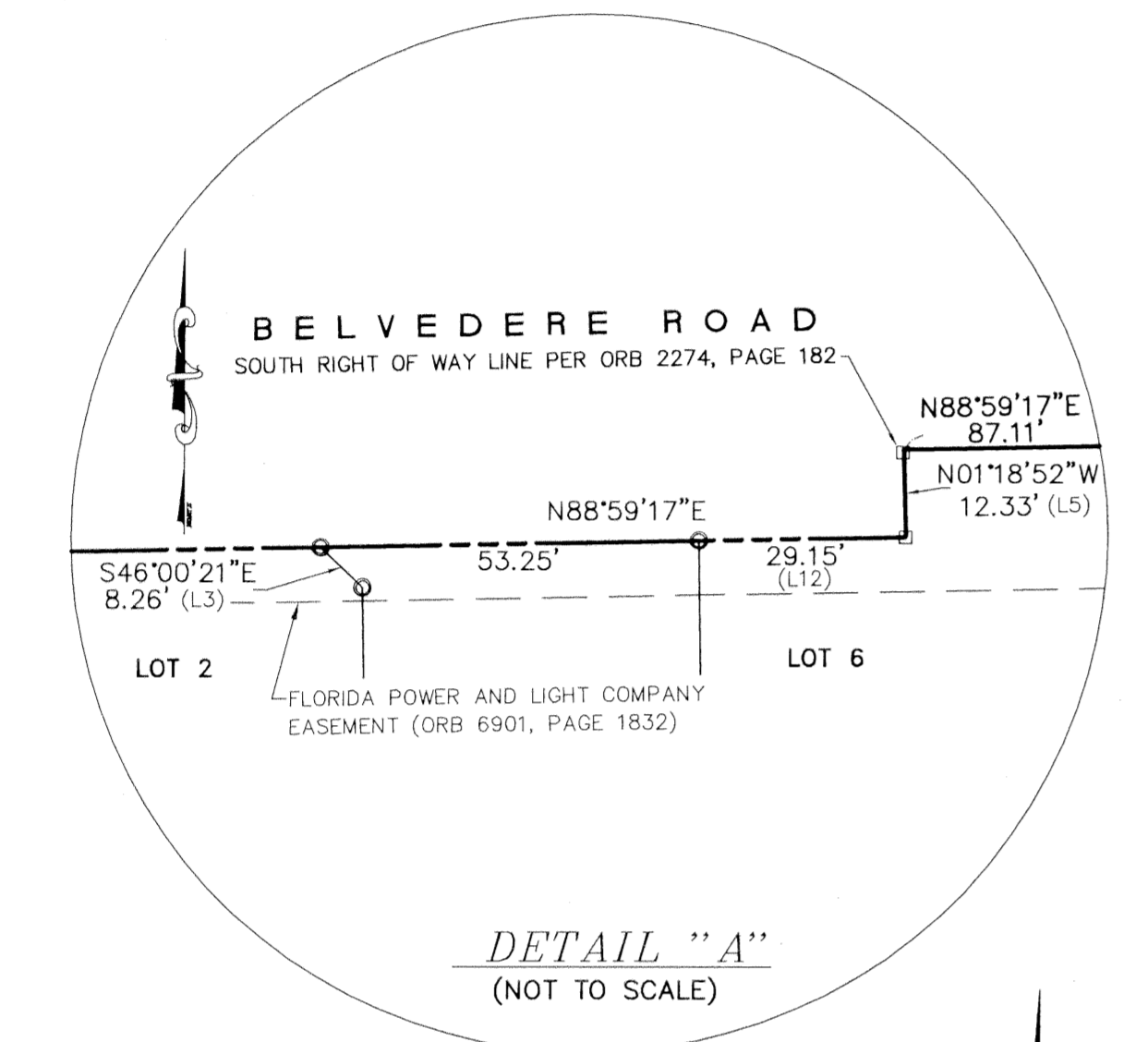
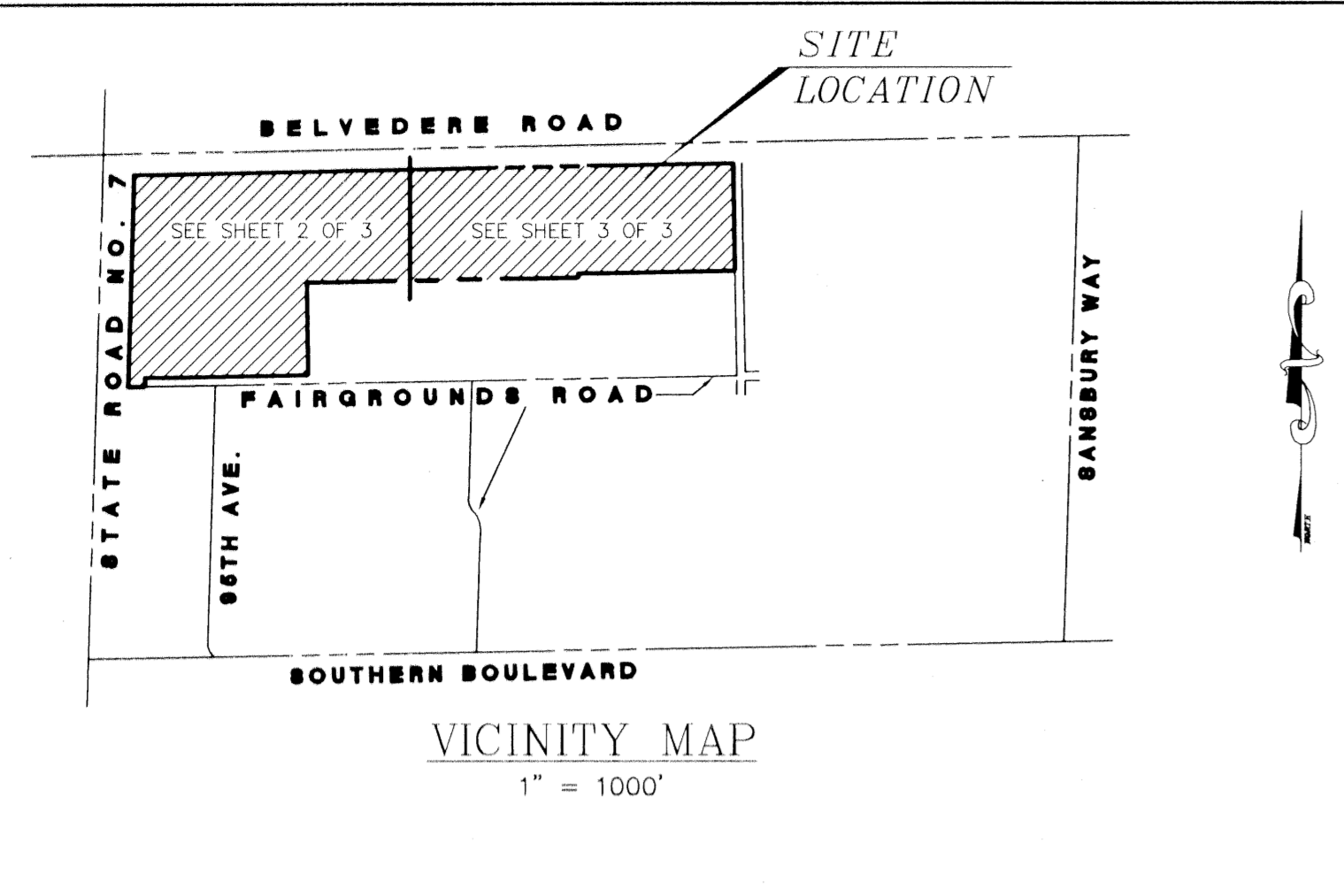


ROYAL PALM TOWN CENTER
VILLAGE OF ROYAL PALM BEACH
PALM BEACH COUNTY, FLORIDA

A PARCEL OF LAND SITUATE LYING AND BEING IN SECTION 31, TOWNSHIP 43 SOUTH, RANGE 42 EAST OF TALLHASSEE BASE MERIDIAN AND BEING A PORTION OF TRACTS 1, 2, 3, 4, 5 AND 6, BLOCK 8, OF PALM BEACH FARMS CO. PLAT NO. 3. AS RECORDED IN PLAT BOOK 2, PAGES 45 THROUGH 54, OF THE PUBLIC RECORDS OF PALM BEACH COUNTY, FLORIDA.

STATE OF FLORIDA
COUNTY OF PALM BEACH
THIS PLAT WAS FILED FOR RECORD AT _____ THIS _____ DAY OF _____, 2002 AND DULY RECORDED IN PLAT BOOK _____, PAGES _____ AND _____
DOROTHY H. WILKEN, CLERK
BY: _____ D.C.

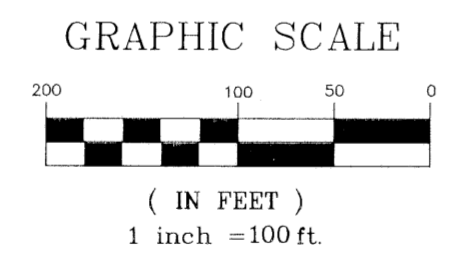


LEGEND OF SYMBOLS

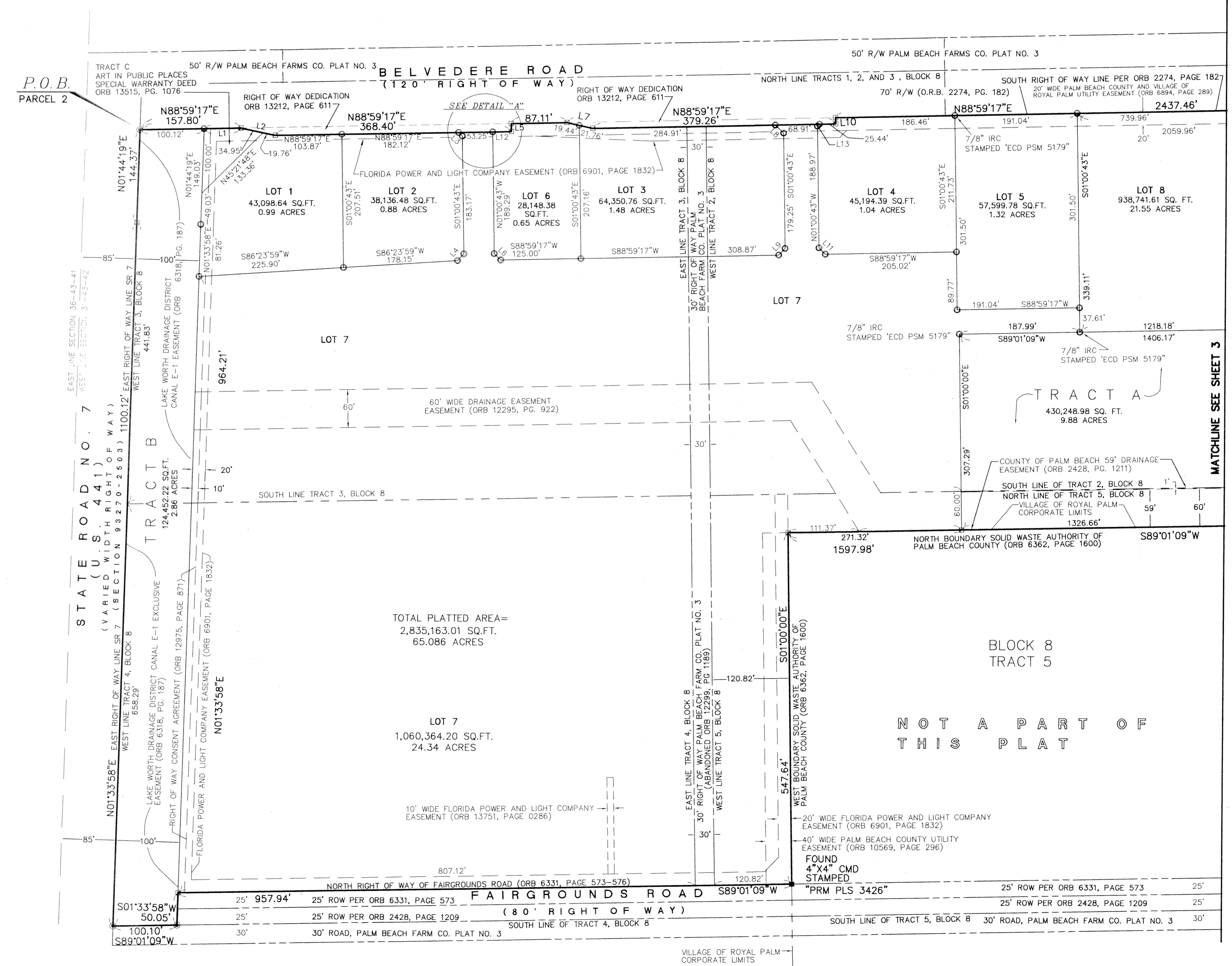
- = DENOTES 5/8" IRC STAMPED "LB 696" SET (UNLESS OTHERWISE NOTED)
- = DENOTES PERMANENT REFERENCE MONUMENT STAMPED "PRM ECD PRM 5179" (EXCEPT AS NOTED)
- = DENOTES PERMANENT REFERENCE MONUMENT SET (PK AND DISK STAMPED "ECD PRM 5179")
- = DENOTES PERMANENT CONTROL POINT SET
- = PROPERTY LINE
- - - = RIGHT-OF-WAY LINE
- - - - = EASEMENT LINE

ABBREVIATIONS

- DWS = DRAWING
- E = EAST
- ECD = E.C. DEMETER
- INC = INCORPORATED
- IRC = IRON ROD with CAP
- LB = LICENSED BUSINESS
- N = NORTH
- ORB = OFFICIAL RECORD BOOK
- PB = PLAT BOOK
- PC = PAGE
- PK = PARKER KALON
- PRM = PERMANENT REFERENCE MONUMENT 4"x4" CONCRETE MONUMENT STAMPED "PRM ECD PSM 5179"
- POB = POINT OF BEGINNING
- PSM = PROFESSIONAL SURVEYOR AND MAPPER
- R = RADIUS
- RNG = RANGE
- S = SOUTH
- SEC = SECTION
- SR = STATE ROAD
- TWP = TOWNSHIP
- US = UNITED STATES
- W = WEST



LINE	LENGTH	BEARING
L1	57.68'	N88°59'17"E
L2	54.71'	S77°59'14"E
L3	8.26'	S46°00'21"E
L4	14.46'	S42°42'00"W
L5	12.33'	N01°18'52"W
L6	14.27'	N46°00'00"W
L7	41.21'	S77°26'58"E
L8	18.10'	S46°00'21"E
L9	14.14'	S44°00'00"W
L10	9.66'	N01°00'43"W
L11	14.14'	N46°00'00"W
L12	29.15'	N88°59'17"E
L13	4.39'	N44°04'42"E



NOT A PART OF THIS PLAT